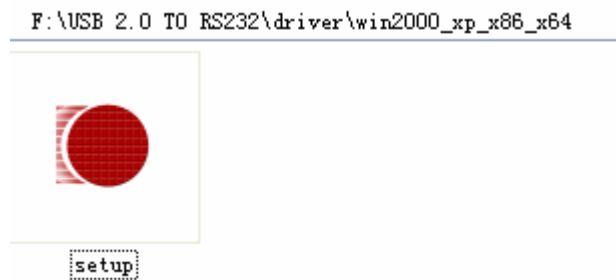


Welcome to use our product

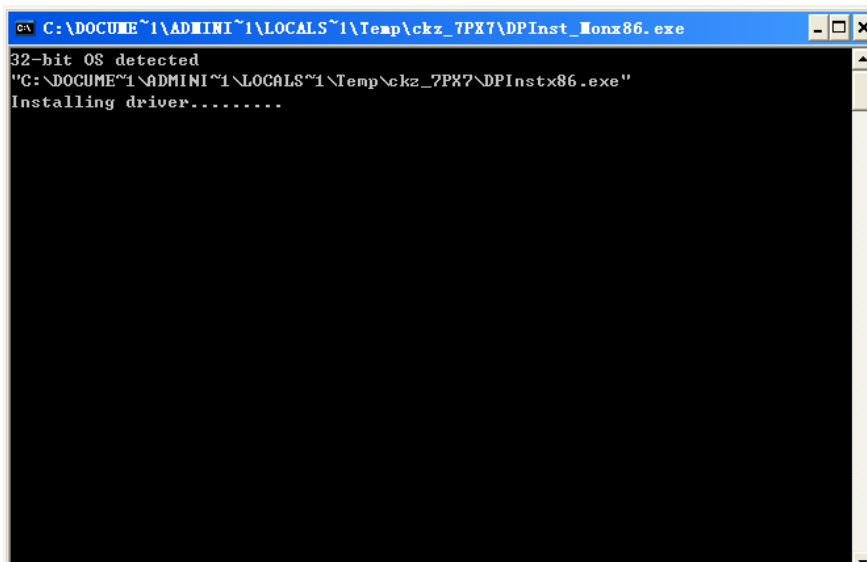
Installation Guide

Step 1: Insert CD Driver of this product to the CD-ROM

Step 2: Open the drivers of this product , please refer to the below chart :



Step 3: Double click “setup.exe”, it appears the following interface



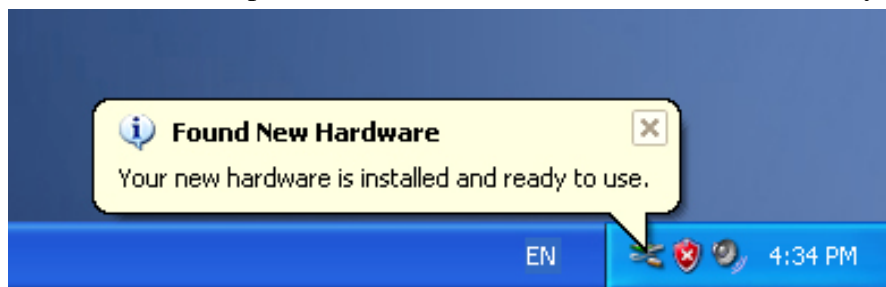
Step 4: System can auto Install the driver

Step 5: Finished installation, Please connect the USB 2.0 To Rs232 to computer USB Port, the system will detect it and Find new com port.

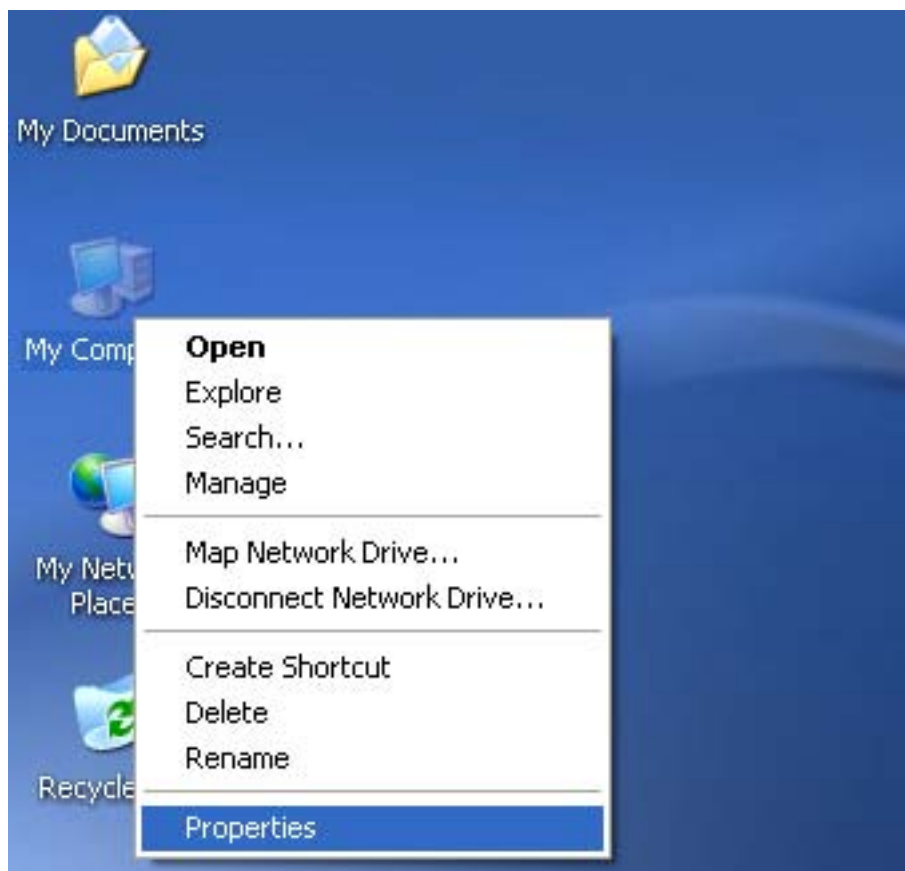


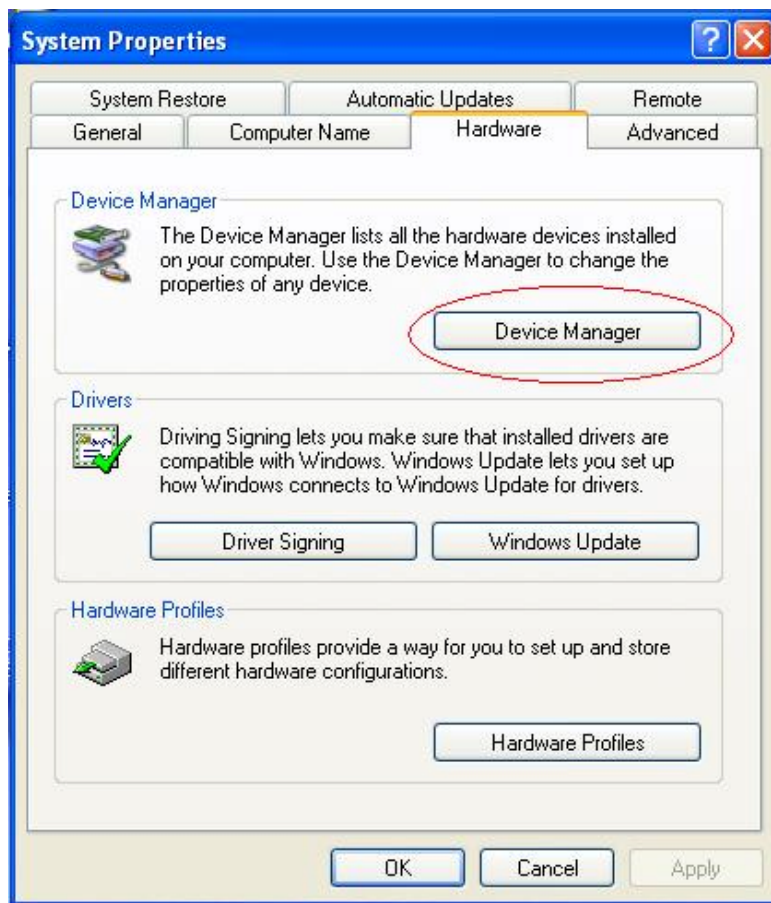
Step 6: Auto insllation and copy file to your system

Step 7: Installation completed , Your new hardware is installed and ready to use.

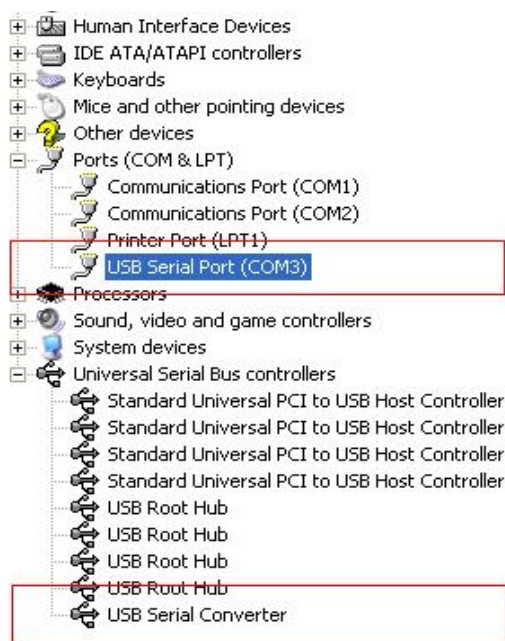


Step 8: If you want to see it, right click “ my computer” , then click “Properties”.





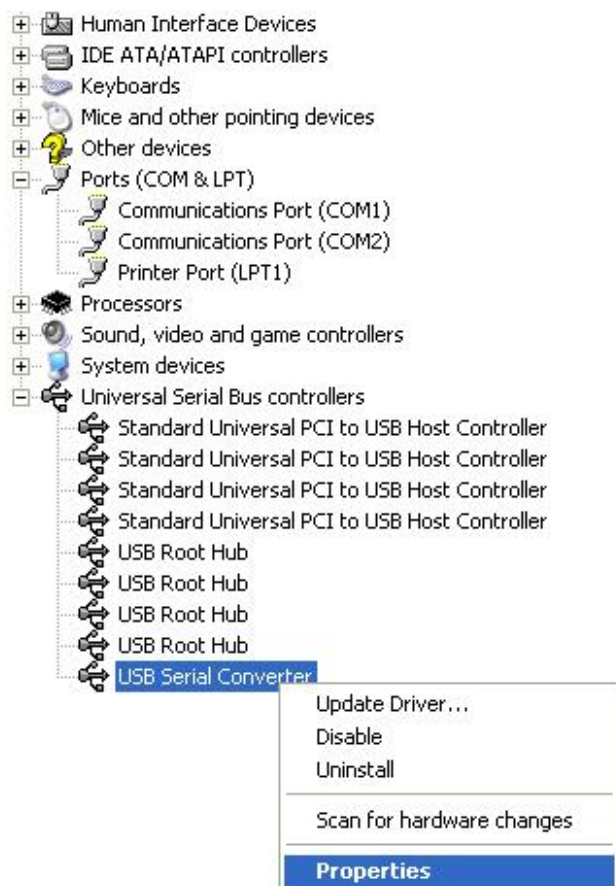
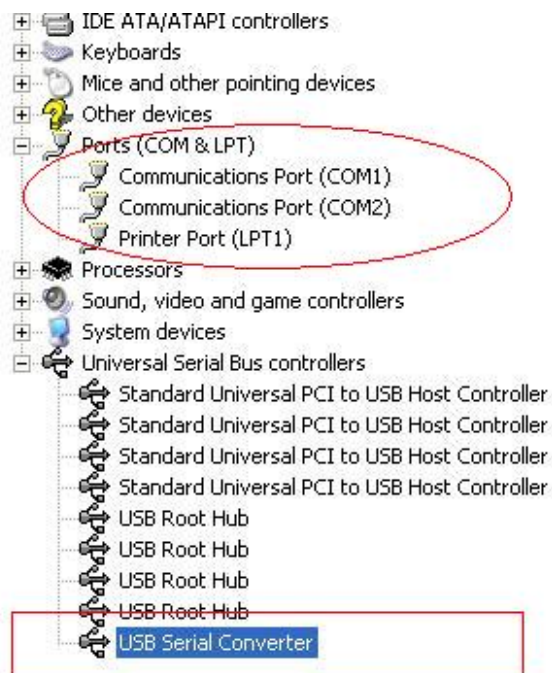
Step 9: Select “Device Manager” in the “Hardware” of the interface “System Properties”, click it, you can see the hardware devices installed on your computer , please refer to the following chart :



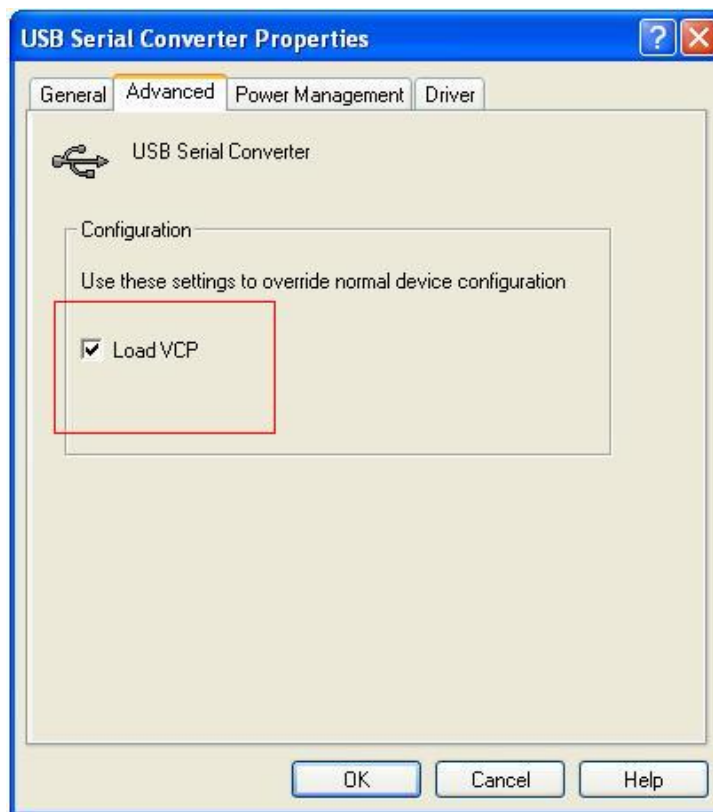
Step 10: Installation finished .

Remarks:

After installation , if you can see “USB Serial Converter” from the “Device Manager” ,but can’t see “USB Serial Port(COM3)” , please continue next steps.

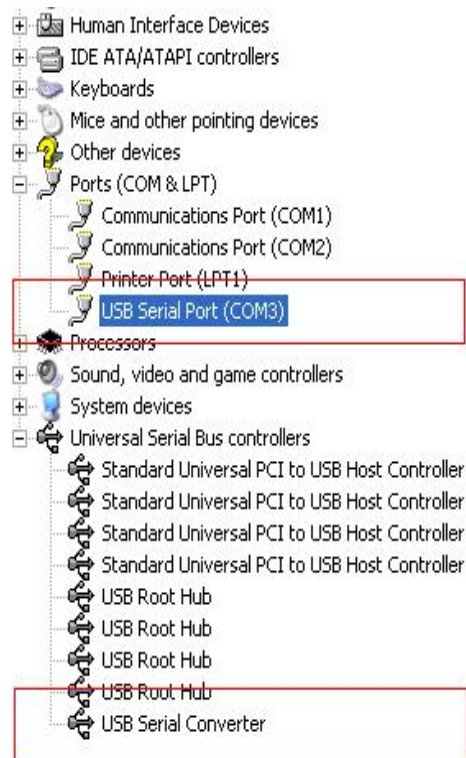


Step A: Right click “USB Serial Converter”, then click “Properties”.



Step B: Select “Load VCP” in the “Advanced”, click “OK”.

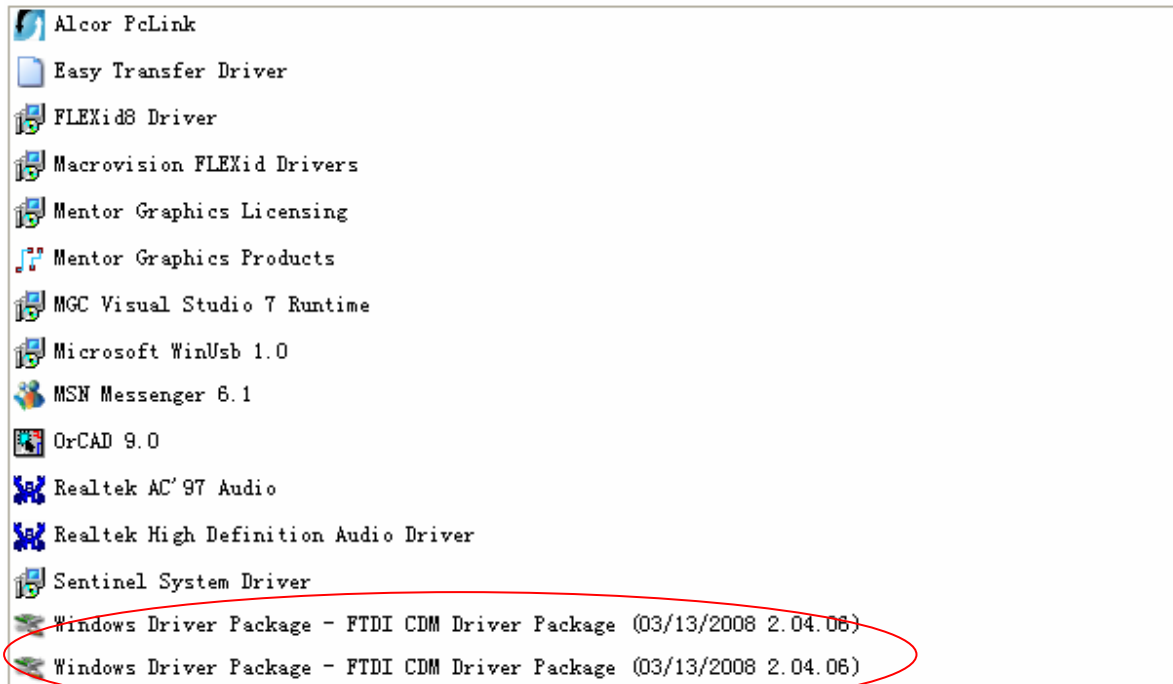
Step C: Move out USB TO RS232 on your computer. Connect the device to an old USB port on your PC again, now it's ok , please refer to the following chart:



Congratulations, installation is successful.

Remove Driver

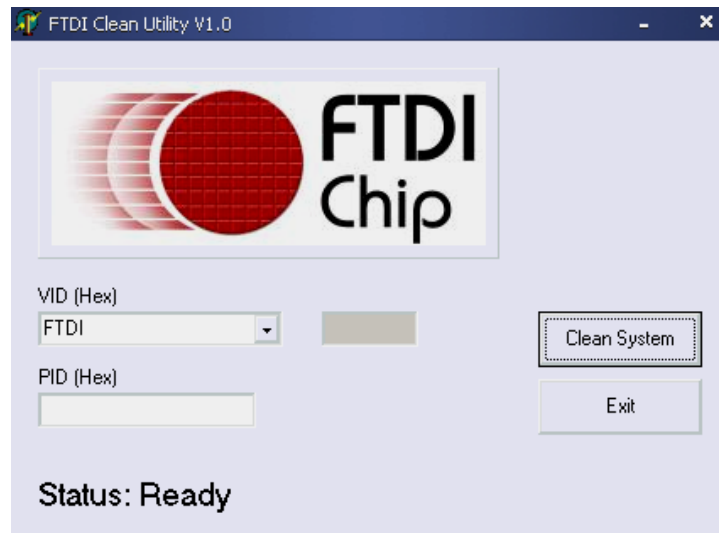
- 1, Go to the " Add or Remove program " from " Control pane " to find the
"Windows Driver Package--- FTDI CDM Driver Package (03/13/2008 2.04.06)"
Windows Driver Package--- FTDI CDM Driver Package (03/13/2008 2.04.06)"
program , refer to the below frame :



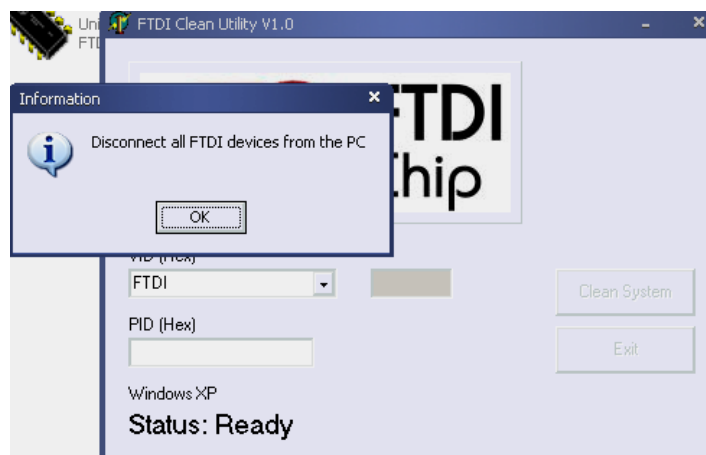
- 2, Just select it and click " Remove " to remove the driver program .
- 3, Open the drivers of this product , please refer to the below chart :



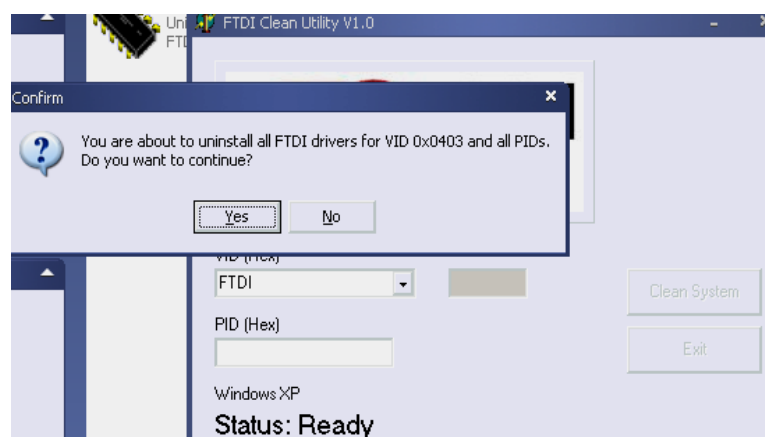
- 4 , Double click "FTClen.exe", it appears the following interface



5 , click “Clean System”, it appears the following interface :



6 , Disconnect USB 2.0 To rs232 device from the pc , click “ok”it appears the following interface,then click “Yes”



7, please click “No” to uninstall driver



8, When Uninstall is completed, please click "Exit" to terminate the uninstall application.

